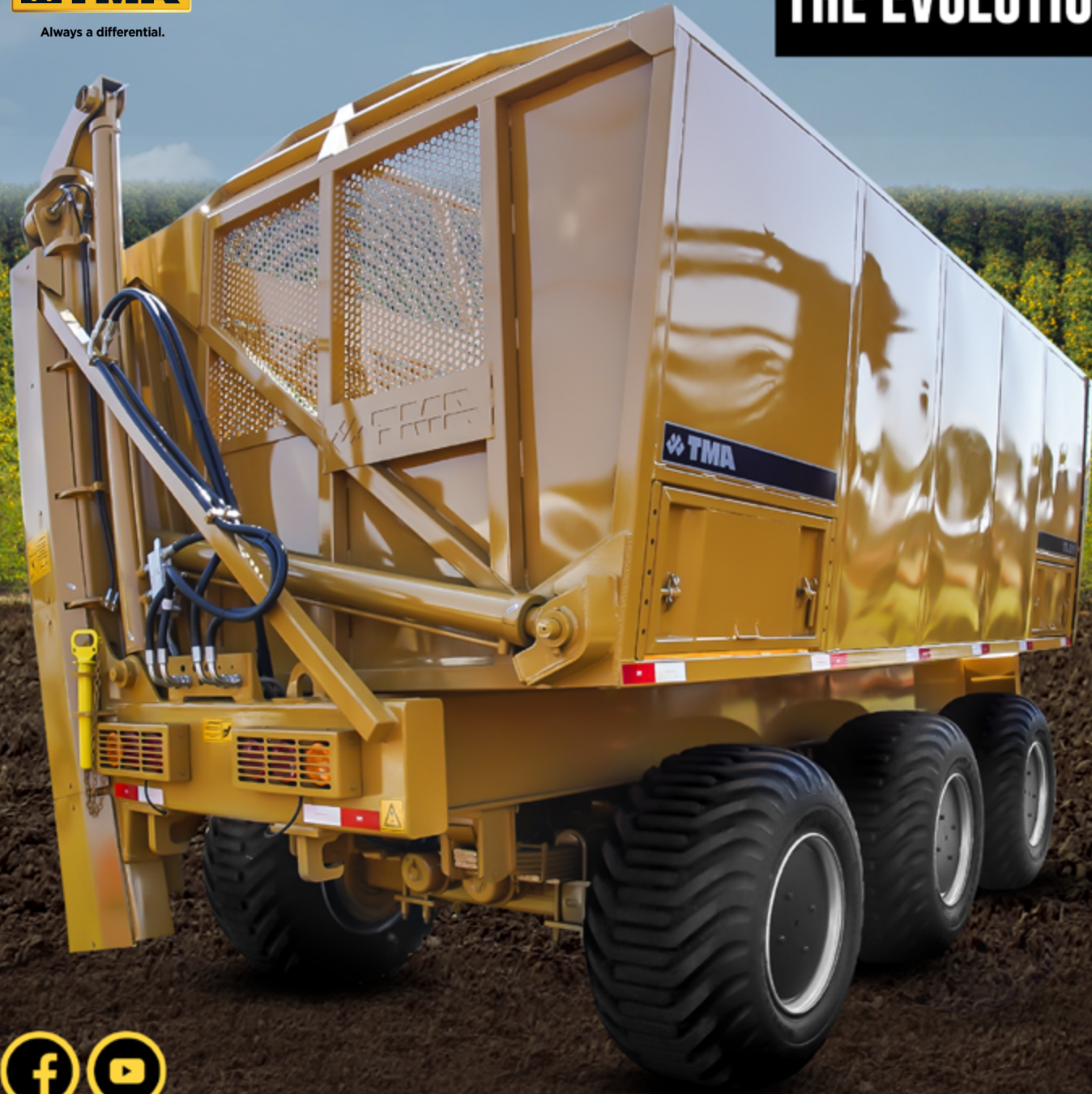




Always a differential.

# THE EVOLUTION OF POWER



# VTL 2515 ORANGE WAGON

TMA orange wagon stands out for its robustness and operational performance. Its structure is designed to support the most severe working conditions.

## SOME OF ITS ADVANTAGES ARE:

- ▶ The largest actual volume available in the 25m<sup>3</sup> cargo basket: approximately 15.000 kg.
- ▶ Shorter maintenance cycle!
- ▶ The smallest turning radius on the market!
- ▶ Load elevator with favorable angle for filling.
- ▶ Greater reach on the transport trailer, centralizing the load.

## TECHNICAL SPECIFICATIONS

TOTAL WIDTH	3.000 mm
TOTAL LENGHT	7.361 mm
TOTAL HEIGHT	4.365 mm
LOADING HIGH	4.400 mm
TRANSSHIPMENT HEIGHT	4.600 mm
GAUGE	2.000 mm
VOLUMETRIC CAPACITY	25 m <sup>3</sup>
LOADING CAPACITY	15 Tons
TOTAL WEIGHT	11.500 kg
HIGH-FLOTATION TIRES	600/50-22.5

## SPECIAL FEATURES

- ▶ Lift angle suitable for positioning the load in the center of the transport vehicle. Unloading angle superior to the repose angle, ensuring 100% load transfer. Appropriate gauges in accordance with the preservation of the orange stalks. Suitable for all trailer bodies available on the market

## EXCLUSIVE TMA TRIDEM SUSPENSION

- ▶ Brake System with 4 spring brakes.
- ▶ 8" brake linings on both rear axles.
- ▶ Air Reservoir 40 L.
- ▶ Relay valve.
- ▶ Discharge valve.

## ELEVATOR

- ▶ "H" Elevator assembled with tubular profiles, the main beam being reinforced and dimensioned according to structural calculations, also having a flat side plate to avoid damage to the plants.

## LOAD TANK

- ▶ It's articulated with 4 joints; being the upper half of the closures in perforated plate to improve the visibility of the operators and the rest fully closed with flat plate to avoid damage to the plant.

## HYDRAULIC CIRCUIT

- ▶ Hydraulic cylinders Ø 3.1/2 X 5" X 2000 mm with 25.000 kg lift capacity each.
- ▶ Safety valve approved to meet the NR 12 safety standard.
- ▶ Hydraulic hoses sized to meet the NR 12 safety standard.

## ELECTRIC CIRCUIT

- ▶ Auxiliary LED headlights.
- ▶ Siren reverse gear horn.
- ▶ LED flashlight lamp.
- ▶ 6-pin or standard tractor plugs.

## CHASSI

- ▶ Built in tubular profile reinforced with upper and lower plates providing considerable increase in the moment of inertia of the girders. Chassis longitudinal beams without transverse splices.

## HEADER

- ▶ Reinforced coupling header allowing for radical maneuvers, with adjustable lower structure absorbing high tensions and optional. Support leg for the header when uncoupled from the tractor. 4" pinball type hitch, allowing greater freedom in maneuvering and greater resistance to traction.

## OPTIONALS:

- ▶ 6 load cells, ensuring precise control with digital load indicator and printer (optional).
- ▶ Radial tires.



3100, Thomaz Alberto Whately Av.  
Pg. Ind. Coronel Quito Junqueira  
14075-380 - Ribeirão Preto/SP

Corporate TMA: +5516 3969.4933 | Technical Assistance WhatsApp: +5516 99772.5083

Business WhatsApp: +5516 99629.7181

**TMA**

WWW.TMAMAQUINAS.COM.BR



MADE IN  
BRAZIL

